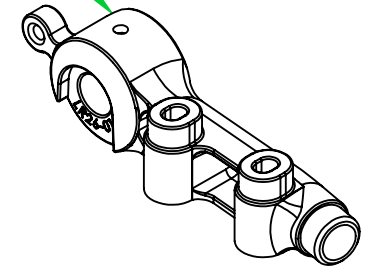


MODEL	Material	TAP	AxleL	eydet
LR26A-1	CR-MO	SHIMANO M12*P1.5	172	1
LR26B-1		SRAM M12*P1.5	174	1
LR26C-1		DT SWISS M12*P1.0	174	1
LR26A		SHIMANO M12*P1.5	172	0
LR26B		SRAM M12*P1.5	174	0
LR26C		DT SWISS M12*P1.0	174	0
LR26A-1-S	Stainless	SHIMANO M12*P1.5	172	1
LR26B-1-S		SRAM M12*P1.5	174	1
LR26C-1-S		DT SWISS M12*P1.0	174	1
LR26A-S		SHIMANO M12*P1.5	172	0
LR26B-S		SRAM M12*P1.5	174	0
LR26C-S		DT SWISS M12*P1.0	174	0

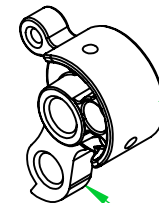
**Remark:**

- 1.\*\* Assembly dim
- 2.Dims tolerance +/-0.15mm
- 3.Unless otherwise specifical radius 0.5mm,

LR26-1  
L Body, CR-MO



LR26-2  
R Body, CR-MO



LR25-05 Hanger  
AL, CNC